

TRIP TO: PUERTO RICO



APRIL 19-20 2026

YOUR TRIP MADE EASIER!

-ROUTES

-TIPS

-IMPORTANT DETAILS

If you have any doubts communicate with:

-Roberto Santini (Branch President)

-(787) 233-7680

-Adriana Cruz (Branch Secretary)

-(939) 419-4878

If you're coming in from: San Juan

-Airport name: Luis Munoz Marin International Airport (SJU)

-For car rentals:

-Hertz

-Avis

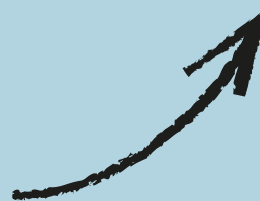
-Budget

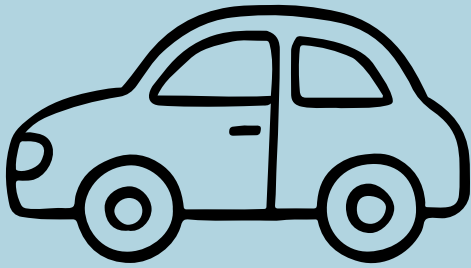
-Enterprise



How to get here:

-Once you finish getting your bags from Baggage Claim, step outside and you will see the car rental places across the street





Once you get your car:

-Input in the GPS app: "Hilton Ponce
Golf and Casino"

-The address should be: 1150 Av. Caribe
Ponce, PR 00716

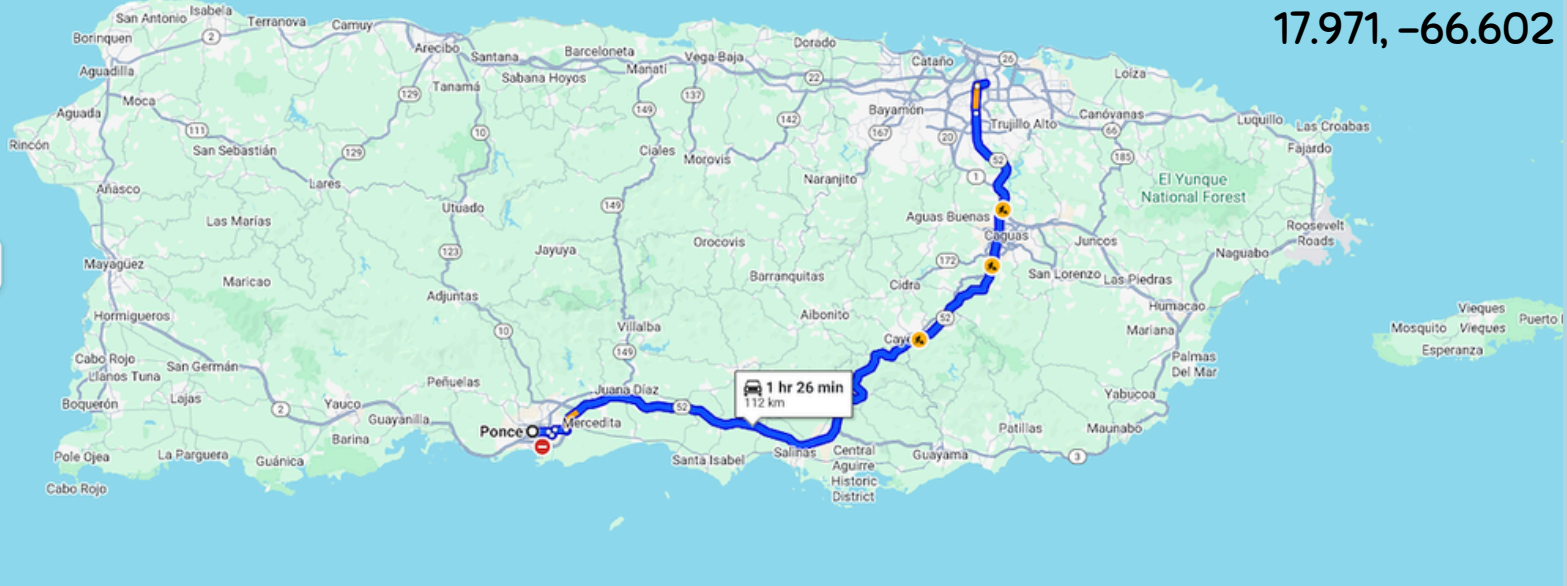
-Once you leave SJU head towards PR-52 South Bound, it will lead you
straight to Ponce

-Once you see the big red "PONCE" letters- you are close to your
destination

-Take exit 104 B PR-12S

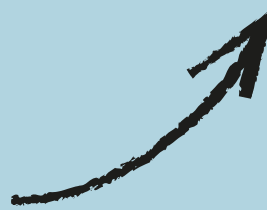
-It will say "Ponce Hilton" on the sign

Coordinates:
17.971, -66.602



The route should look like this

- ETA: Aprox. 1 hr 30 minutes
- Time may vary due to traffic



WARNING: There is
ongoing construction
work on the highway.
Please drive carefully



The exit to take

If you're coming in from Mercedita, Ponce (PSE)

Car rental kiosks are inside the airport:

- Avis
- Enterprise
- Thrifty
- Budget

This airport has limited flights

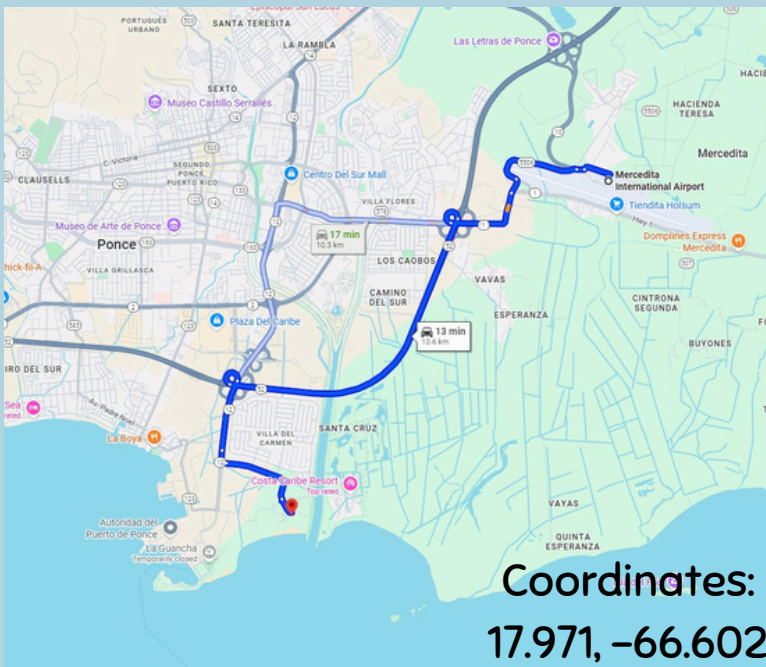
- Incoming flights mostly come from Orlando, FL (MCO) or (JFK), New York



Once you get your car:

- Input in GPS: "Hilton Ponce Golf and Casino"
- Take exit number 104B/ PR-12 S
- It will say "Ponce Hilton" on the sign

WARNING: There is ongoing construction work on the highway. Please drive carefully



Route should look like this
-ETA: Aprox 12-15 mins



The exit to take



Once you take the exit, turn left onto Ave. Caribe and this road will lead you to the hotel entrance!



The entrance looks like this!



Once you arrive at the hotel, check-in and ENJOY!

